



# GAT MONTHLY MEMBERSHIP PROGRESS REPORT

Results as of: 4/30/2022

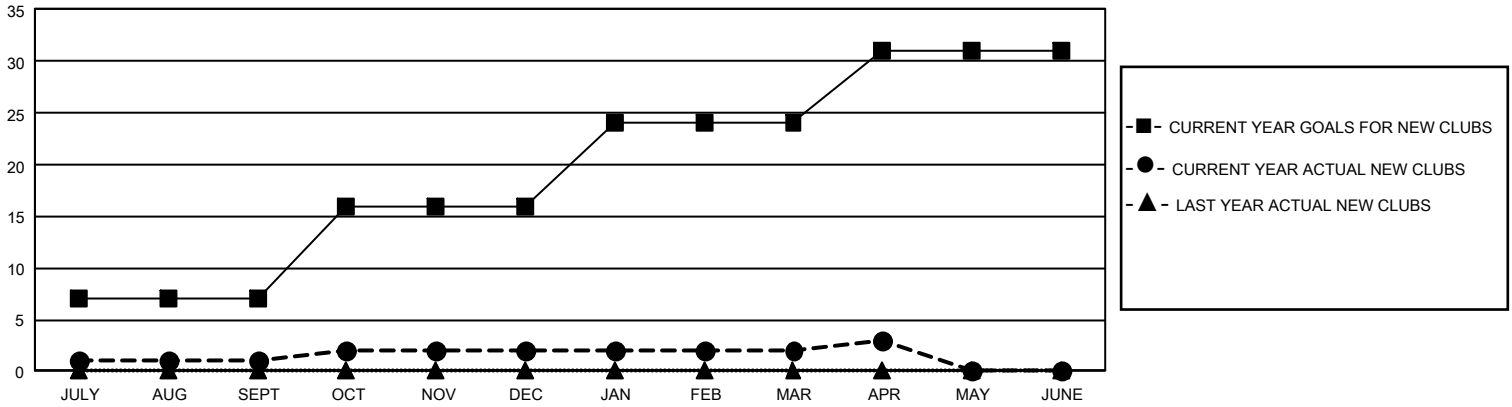
## GMT Constitutional Area 1, Group J

REPORT DOES NOT INCLUDE CLUBS IN UNDISTRICTED AREAS.

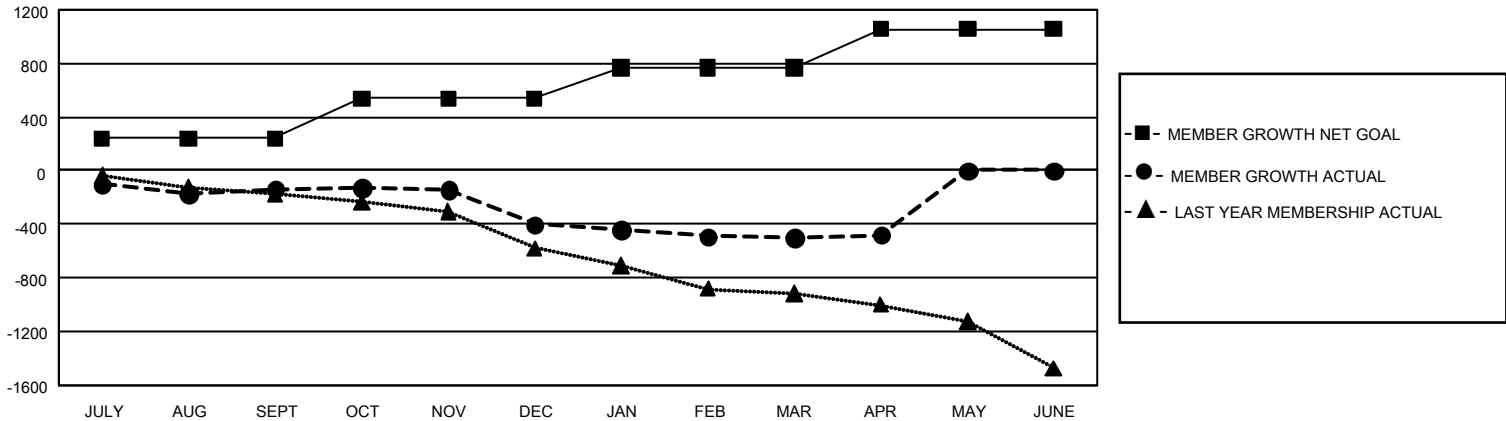
Clubs			
RESULTS FOR 2021-2022			
QUARTER	NEW CLUB GOAL	NEW CLUBS	DROPPED CLUBS
JULY/AUG/SEPT	21	1	10
OCT/NOV/DEC	27	1	13
JAN/FEB/MAR	24	0	5
APR/MAY/JUNE	21	1	1

Members			
RESULTS FOR 2021-2022			
QUARTER	MEMBER GROWTH NET GOAL	MEMBER GROWTH ACTUAL	DROPPED MEMBERS ACTUAL (including transfers)
JULY/AUG/SEPT	241	561	629
OCT/NOV/DEC	297	521	728
JAN/FEB/MAR	231	449	497
APR/MAY/JUNE	287	203	179

GOALS AND ACTUAL NEW CLUBS CUMULATIVE



GOALS AND ACTUAL MEMBERS CUMULATIVE



DROPPED CLUBS: 29	484 CLUBS OF 936 ADDED 1 OR MORE NEW MEMBERS	<u>GENDER DISTRIBUTION</u>	
<u>DROPPED MEMBERS</u>		MALE	14,696 (70.00%)
DECEASED	315	FEMALE	6,296 (29.99%)
CLUB CANCELLED	153	NON BINARY	1 (0.00%)
OTHER	1,565	PREFER NOT TO ANSWER	1 (0.00%)
TOTAL	2,033	TOTAL FAMILY UNIT MEMBERS	4,083
	<a href="#">CLICK HERE FOR CUMULATIVE MEMBERSHIP DATA</a>	FAMILY MEMBERS PAYING HALF DUES	2,079